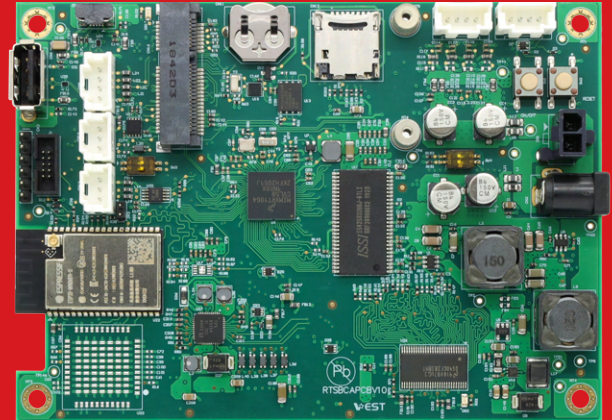


VEST SBC i.MXRT1064

VEST is a leading embedded solutions provider, committing to excellence and innovation. Our Single Board Computer (SBC) is designed for fast integration into your product, enabling swift market entry and ensuring a competitive advantage.



**Industrial /
Commercial
IoT**



**Efficient
CPU**



**Robust Security
Features**



**Rich
Multimedia**

ABOUT OUR PRODUCT

VEST i.MXRT1064 SBC features the NXP i.MXRT Cortex®-M7 Cross Over MCU with high-performance, energy-efficient processing capabilities tailored specifically for real-time applications. This SBC caters to diverse embedded applications across various industries:

- Industrial Automation
- Point of Care and Medical Applications
- Smart Factory automation
- Environmental and Industrial Monitoring Systems

Key Features

- High-Performance NXP i.MXRT Cortex®-M7 Processor that ensures efficient execution of demanding tasks
- Real-time Capabilities for predictable response times for critical operations
- Low power consumption for cost savings and extended battery life in portable devices
- Robust security features for applications and data protection

Support



VESTConnect360
Cloud Management System



Specifications (VEST SBC i.MXRT1064)

MCU Details	
MCU	i.MXRT1064, Cortex®-M7 @ 600 MHz
GPU	2D Graphic Acceleration Engine

Memory	
RAM	1MB On-Chip SDRAM 32MB SDRAM
Storage	4MB On-Chip 8MB QSPI Flash EEPROM or Security IC
External Storage	Micro SD 3.0 Socket Push-Push Type

Operating System	
BSP	RTOS

Multimedia	
Video	LCD Display Controller (up to WXGA 1366 x 768), LVDS Interface with Backlight and I2C Touch Interface, for 7" LVDS LCD Interface, 4.3" and 5.3" RGB LCD Interface
Audio	3x I2S High-Performance, Multi-Channel Audio, Audio Codec, Speaker Output (10W/ch into 8ohm)

Connectivity	
Wireless	Single Band 802.11 a/b/g/n Bluetooth 4.2
USB	USB 2.0 Host USB 2.0 OTG
Serial Communication	RTC CAN RS485
I/O Expansion	USB I2C GPIO UART PWM SPI/SD
Debugging & Programming	1x Debug-UART Header 1x JTAG
Buttons and Indicators	1x On/Off 1x Reset 1x Power LED Indicator
Power	12-24VDC, 2.0mm DC Jack or 2 Pin 4.2mm Pitch Mini Fit JR Header (5VDC Option)

Physical	
Form Factor	125mm x 90mm
Operating Temperature	Commercial Industrial (Optional)

Ordering Information	
Part No.	VER64SBCWC